

# **COVID-19 Cases and Projections**

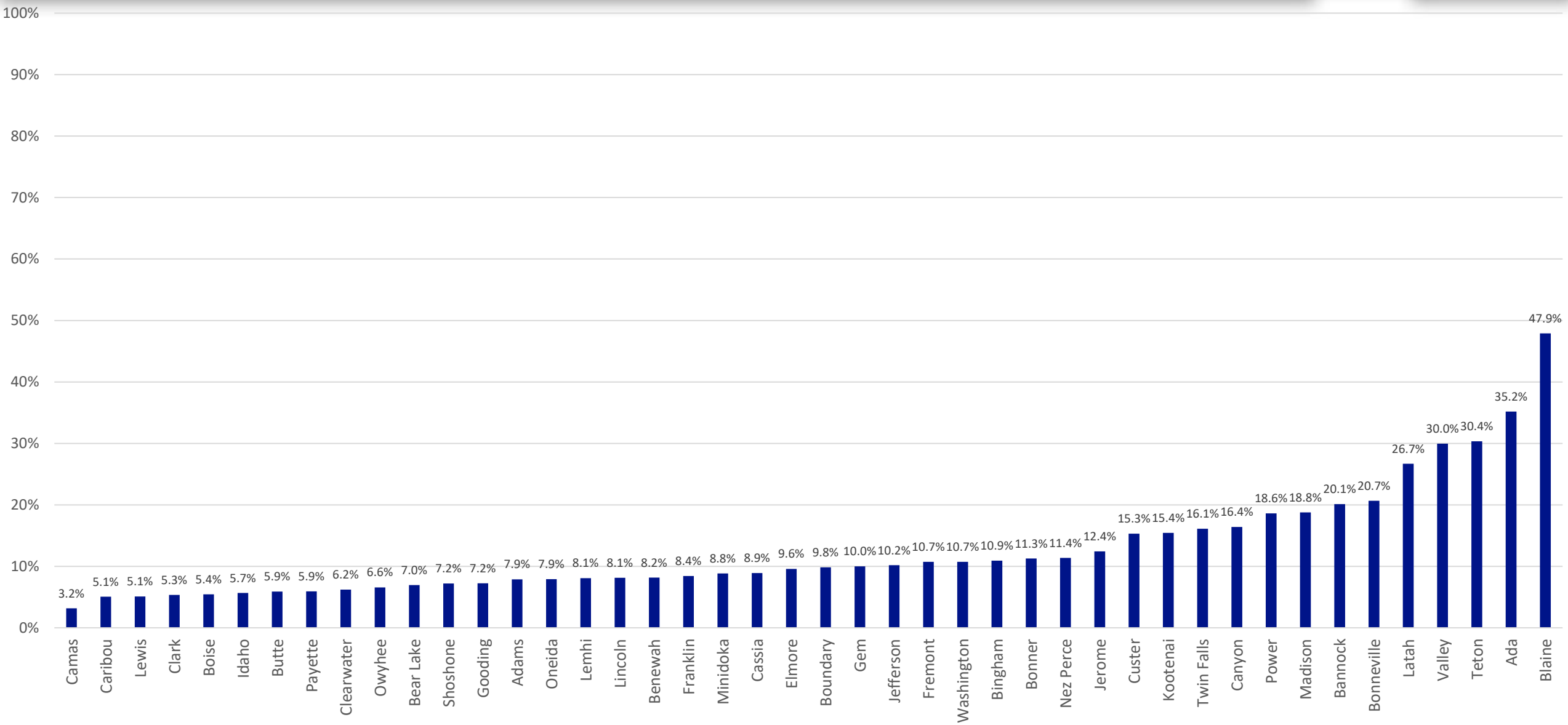
**Kathryn Turner, PhD MPH**

**Deputy State Epidemiologist  
Division of Public Health**

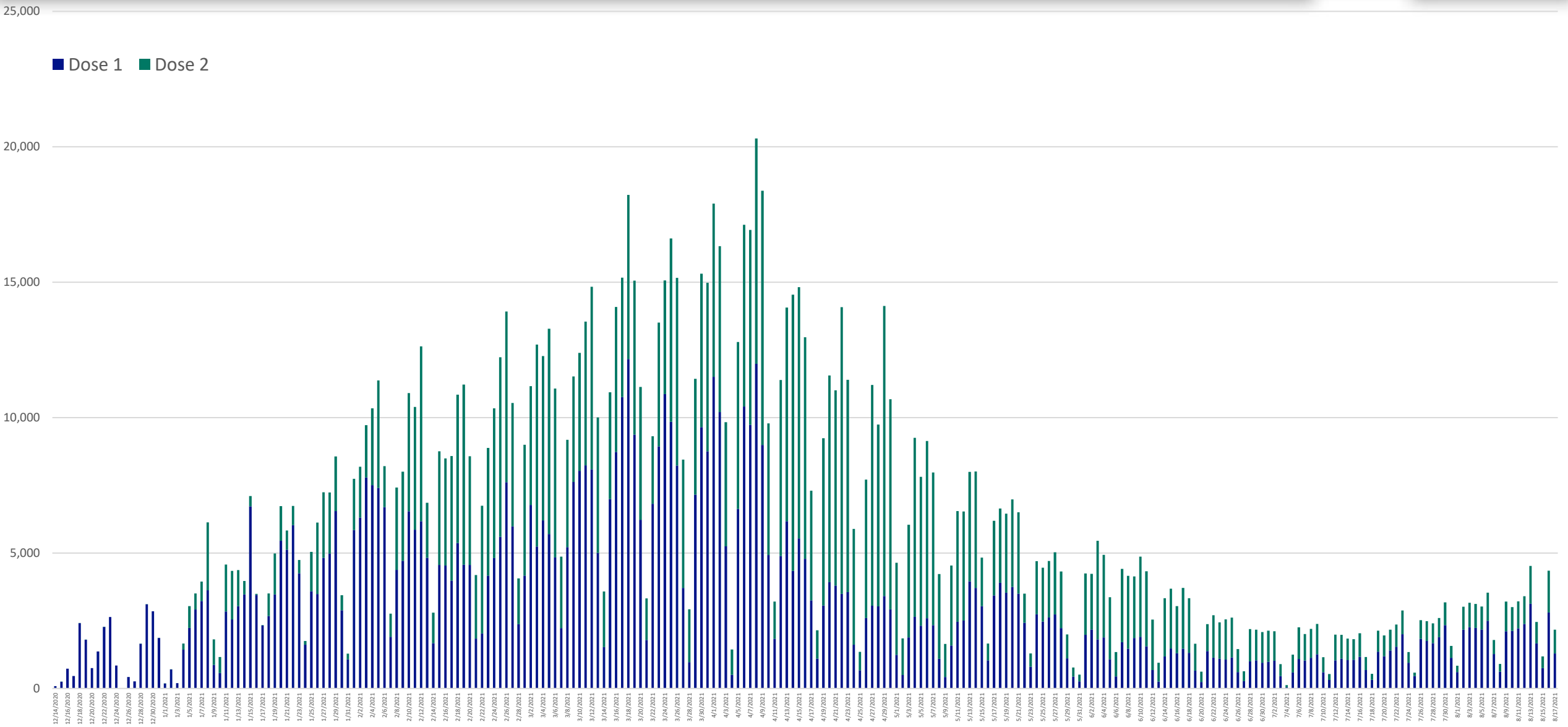


IDAHO DEPARTMENT OF  
**HEALTH & WELFARE**

# Vaccination Coverage: 12-17 year olds



# Slight increase in vaccine administration

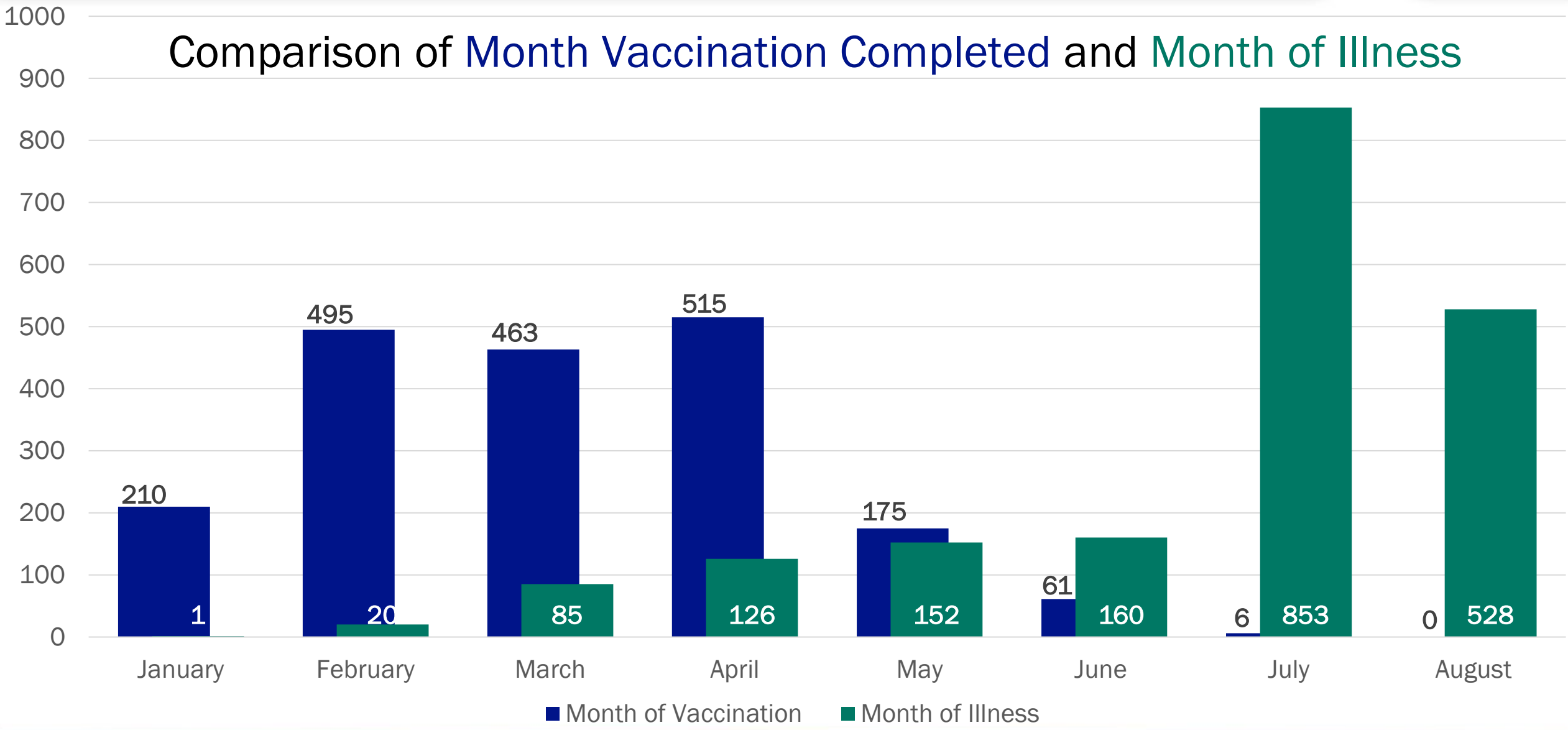


Avg time between vaccination and illness: 117 days

4



Comparison of Month Vaccination Completed and Month of Illness



# Rates by vaccination status since May 15

5



Event	Total	Total Fully Vaccinated June 29 (mid-date)	Rate Among Fully Vaccinated
Cases	1,638	663,271	246.9 / 100,000 Fully Vaccinated
Hospitalizations	60	663,271	9.0 / 100,000 Fully Vaccinated
Deaths	14	663,271	2.1 / 100,000 Fully Vaccinated

Event	Total	Total Not Fully Vaccinated June 29 (mid-date)	Rate Among Not Fully Vaccinated
Cases	17,044	1,175,835	1,449.5 / 100,000 Not Fully Vaccinated
Hospitalizations	828	1,175,835	70.4 / 100,000 Not Fully Vaccinated
Deaths	119	1,175,835	10.1 / 100,000 Not Fully Vaccinated

RR:  
5.9  
7.8  
4.8

People who are vaccinated are nearly 8 times less likely to be hospitalized for COVID-19 if they become infected

# Cases among children 0-4 years: 2021

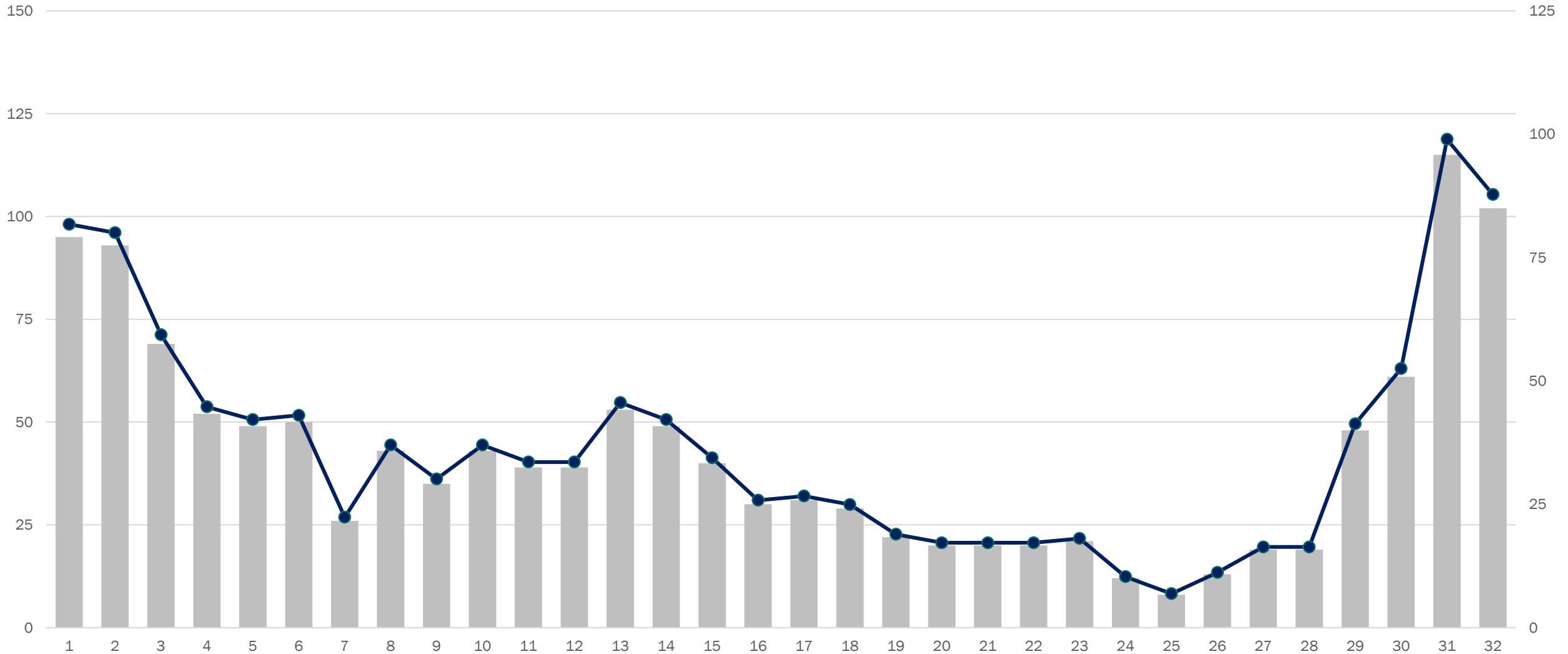
6



Number of cases

0-4 Years of Age

Rate per 100K



# Cases among children 5-12 years: 2021

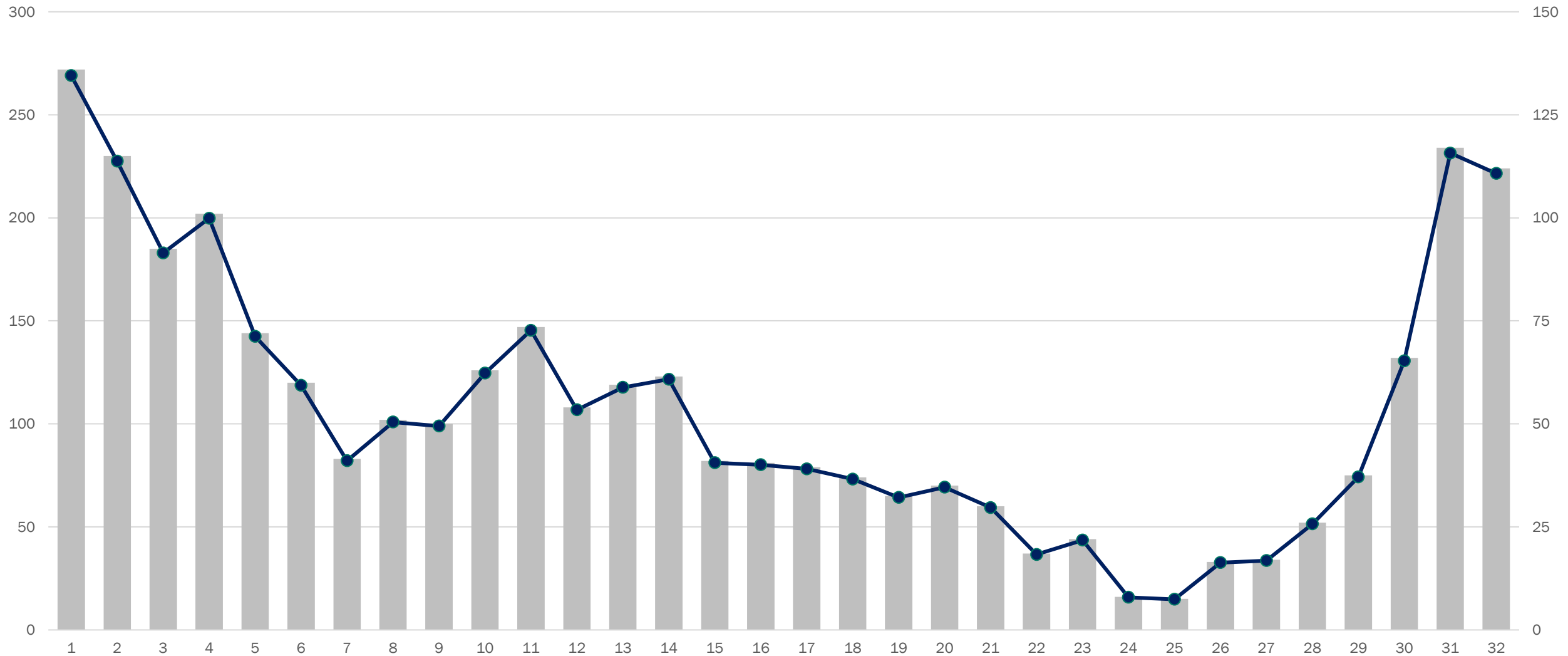
7



Number of cases

5-12 Years of Age

Rate per 100K



# Cases among teens 13-17 years: 2021

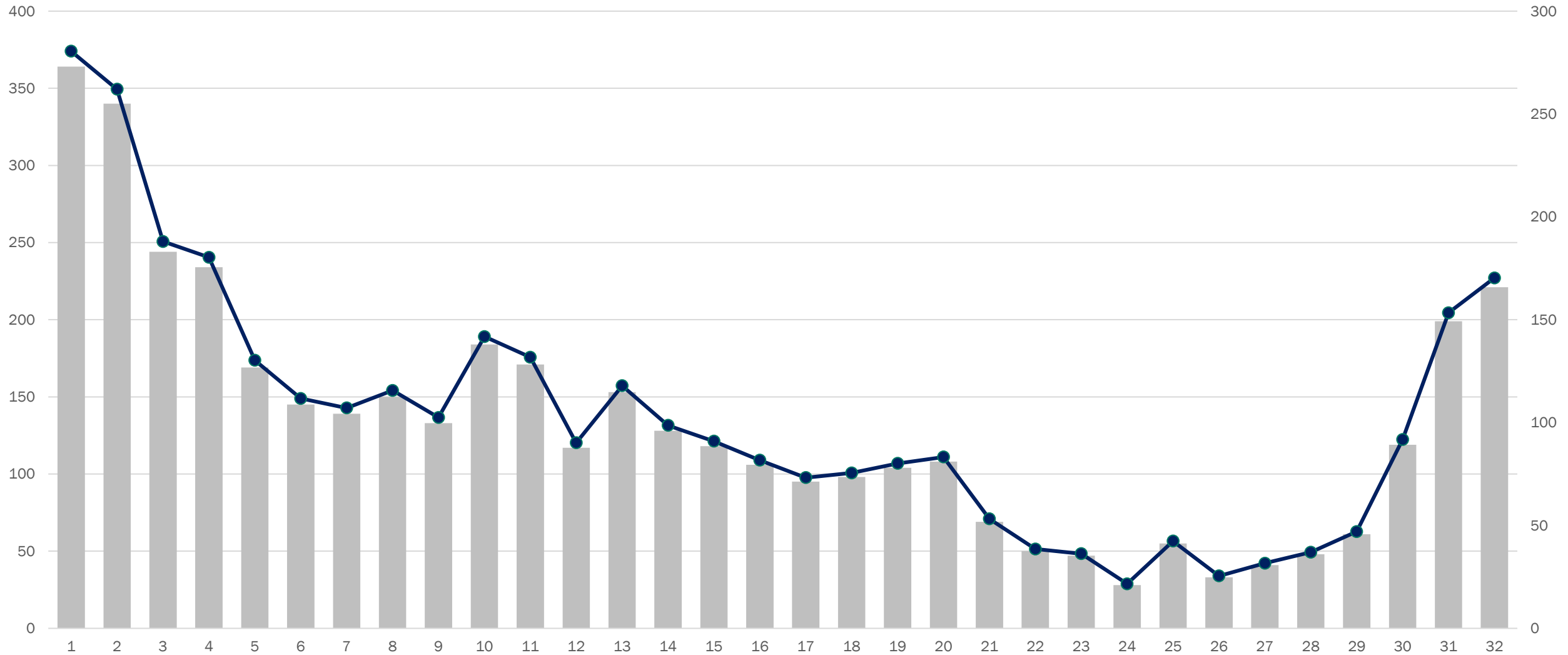
8



Number of cases

13-17 Years of Age

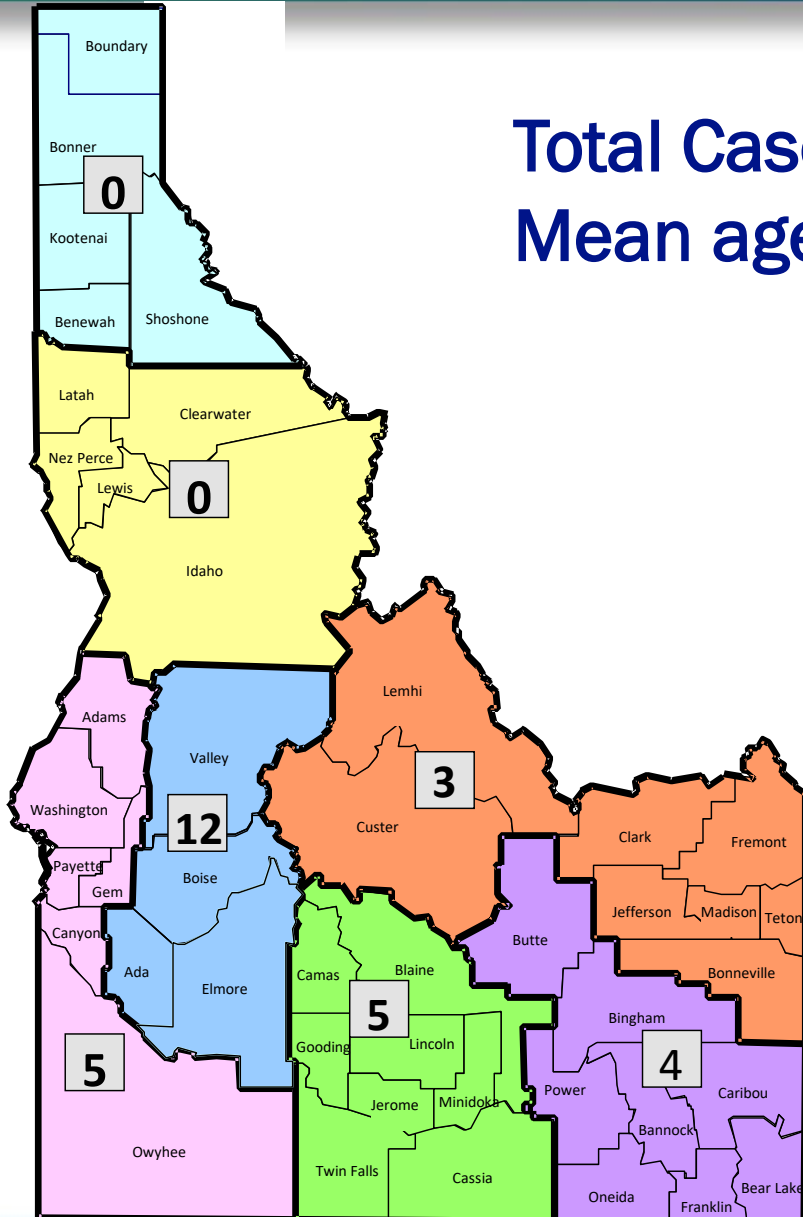
Rate per 100K





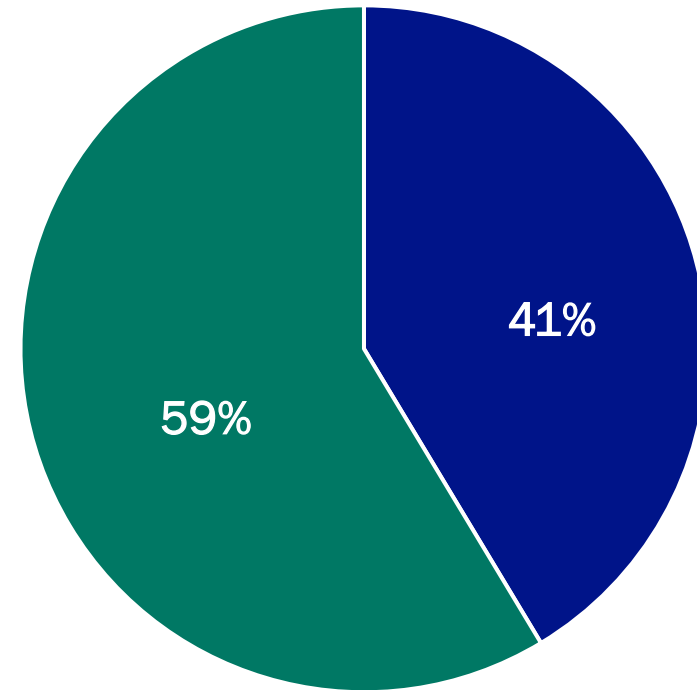
# Multisystem Inflammatory Syndrome (MIS-C)

9



Total Cases: 29  
Mean age: 9.0 years

## ICU Stay



■ ICU

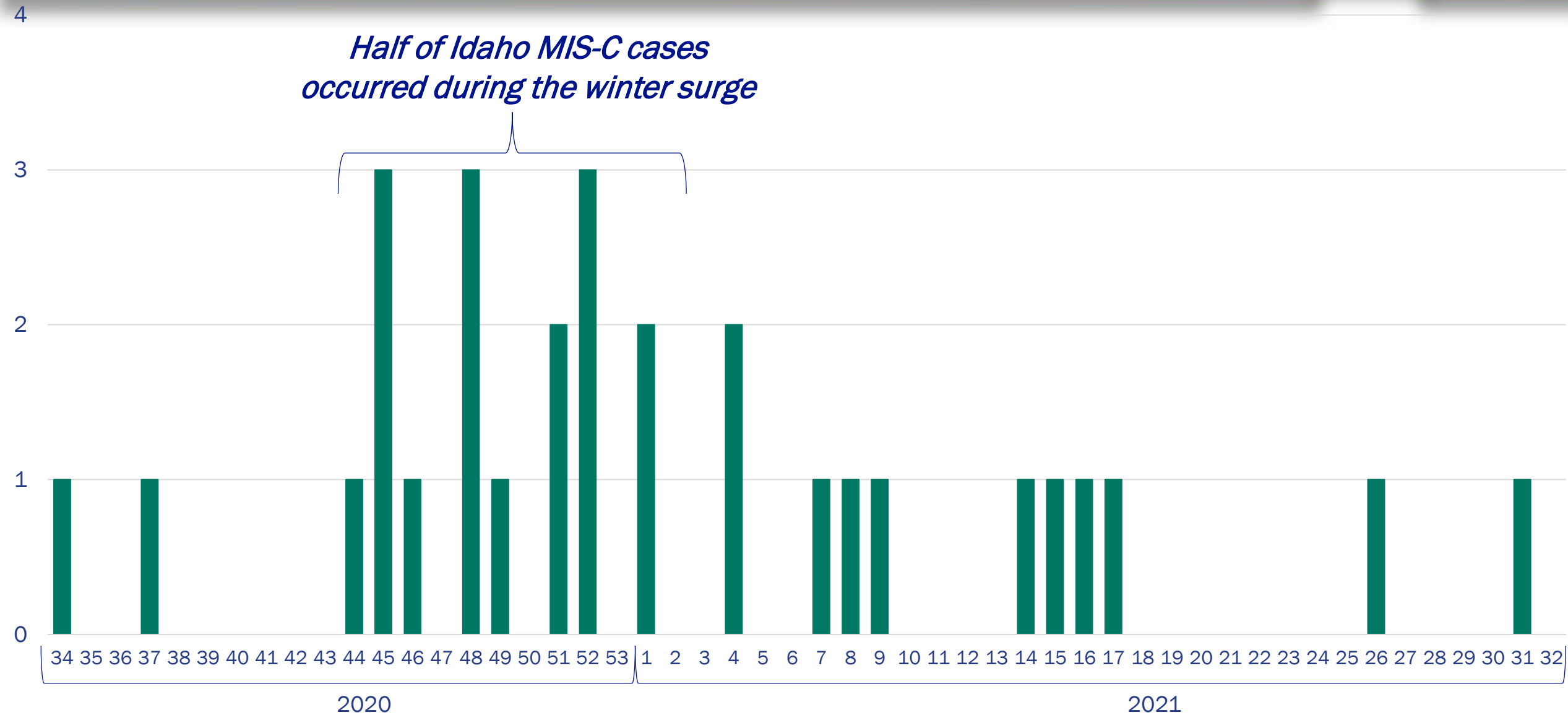
■ No ICU

# MIS-C Epidemiologic Curve

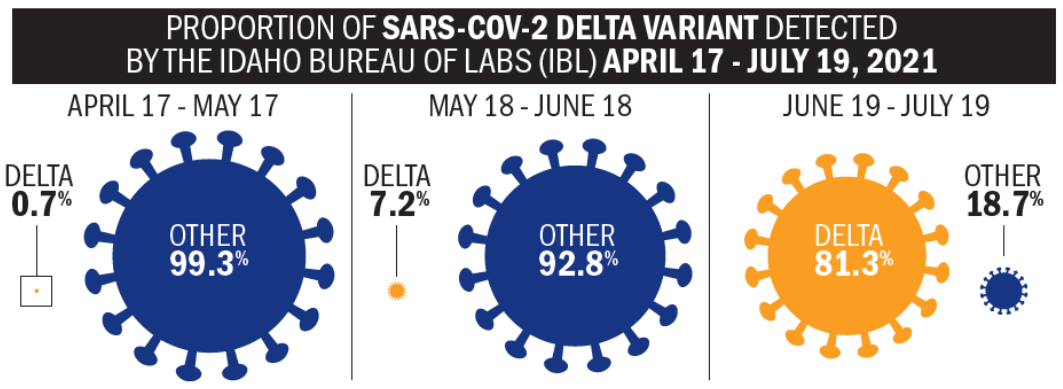
10



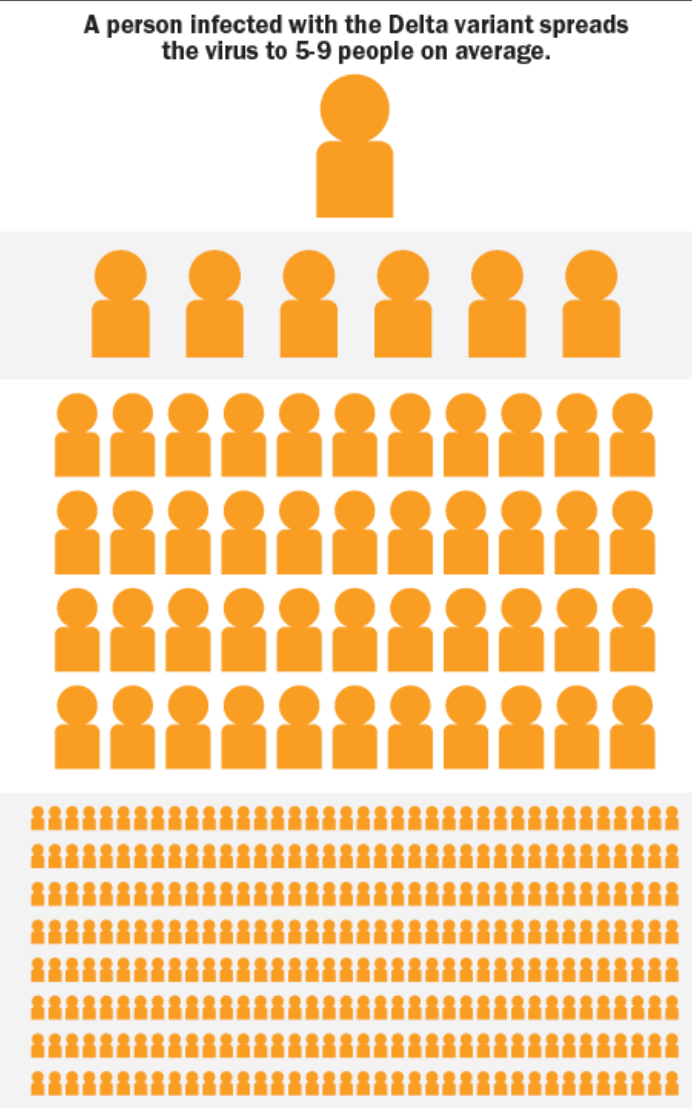
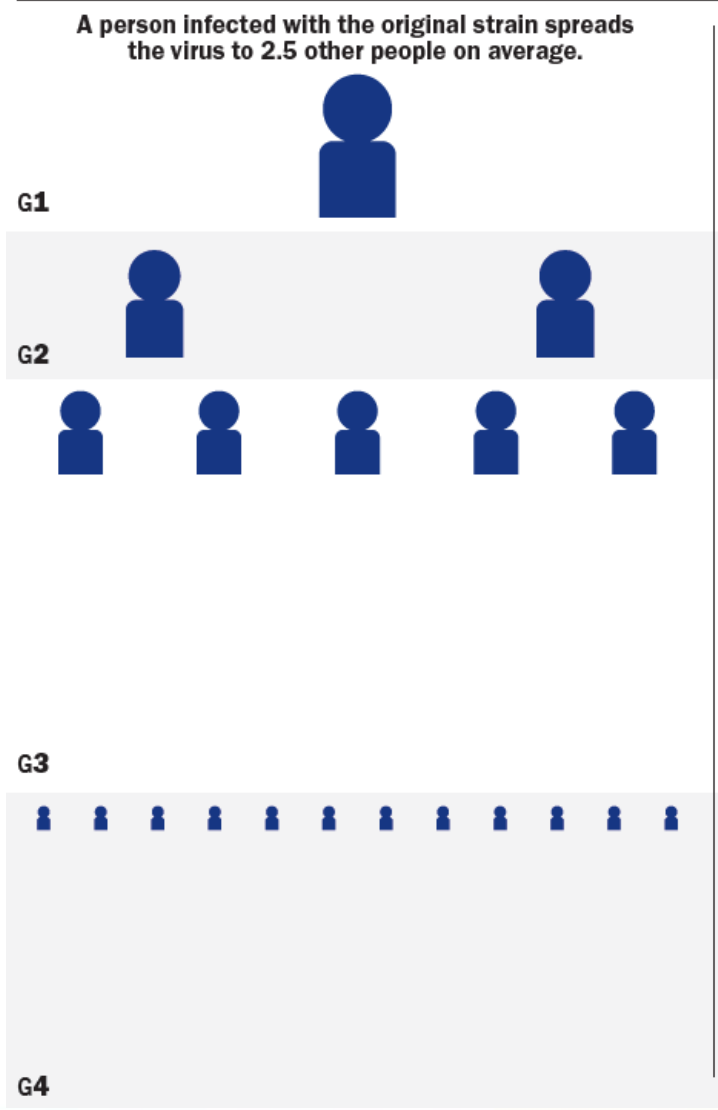
*Half of Idaho MIS-C cases occurred during the winter surge*



# Delta variant – exponential increased transmission



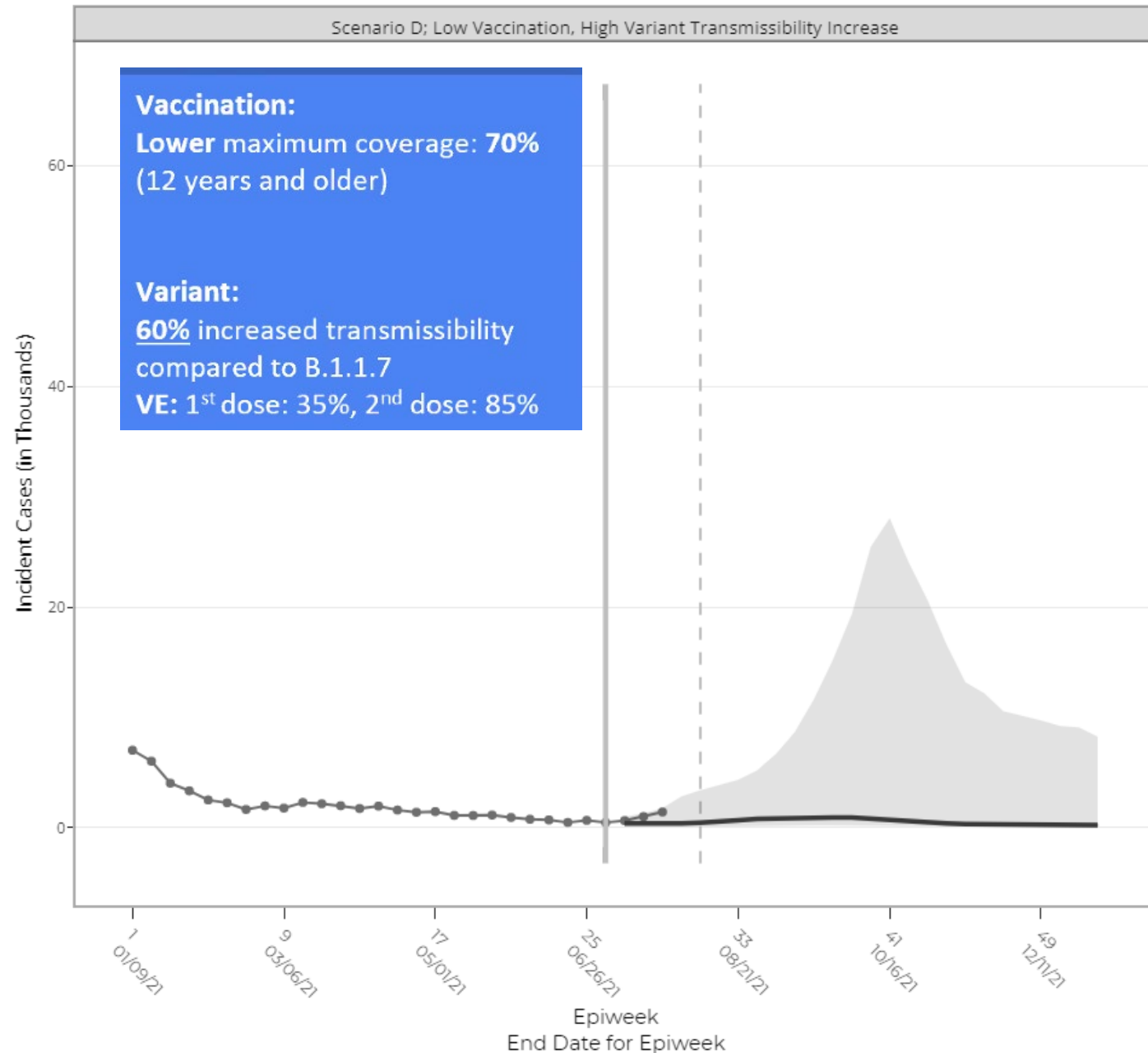
## INCREASED TRANSMISSIBILITY RATE OF THE COVID-19 DELTA VARIANT



# Projections (Cases)

With low vaccination rates and highly transmissible variant, projections estimate case counts peaking in October 2021 at ~30,000 cases / week

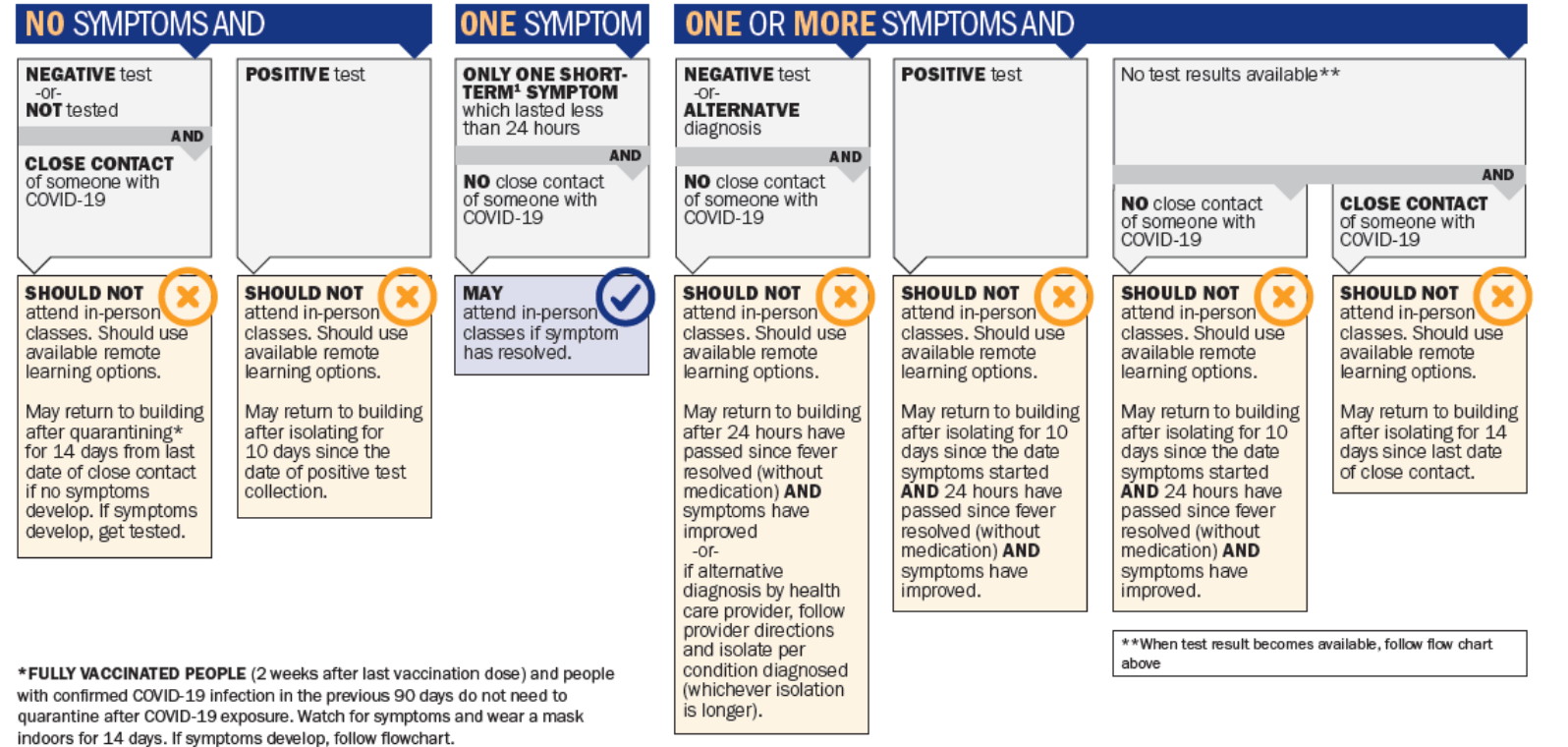
Projected Incident Cases by Epidemiological Week and by Scenario for Round 7  
(- Projection Epiweek; -- Current Week)






**COVID-19 RETURN TO SCHOOL FLOWCHART**
Aug. 2021

**AFTER SCREENING, STAFF OR STUDENT HAS**



**\*FULLY VACCINATED PEOPLE** (2 weeks after last vaccination dose) and people with confirmed COVID-19 infection in the previous 90 days do not need to quarantine after COVID-19 exposure. Watch for symptoms and wear a mask indoors for 14 days. If symptoms develop, follow flowchart.

### COVID-19 SYMPTOMS

- Fever (100.4°F / 38°C or higher)
- Cough
- Loss of taste or smell
- Chills
- Shortness of breath or difficulty breathing
- Fatigue
- Headache
- Muscle pain or body aches
- Sore throat
- Congestion or runny nose
- Nausea or vomiting
- Diarrhea

<sup>1</sup>A **SHORT-TERM SYMPTOM** is defined as: A person has only one of the following symptoms (fatigue; headache; muscle pain or body aches; sore throat; congestion or runny nose; nausea or vomiting; or diarrhea) **AND** the symptom begins and resolves in less than 24 hours **AND** no known close contact COVID-19 exposure. A person can return to school the next day if the short-term symptom resolves. A COVID-19 test is not required.

### CLOSE CONTACT DEFINITION

Close Contact includes anyone in one or more of the following categories:

- Been within 6 feet (2 meters) of a person with COVID 19 for a combined total of 15 minutes or more within a 24 hour period
- Live in the same household as a person with COVID 19
- Cared for a person with COVID 19
- Been in direct contact with saliva or other body secretions from a person with COVID 19 for example : been coughed on, kissed, shared utensils, etc.

If you've been exposed to someone with COVID-19 and you have no symptoms, Public Health recommends the following

- Stay in quarantine for 14 days after your last contact. This is the safest option.
- If this is not possible, stay in quarantine for 10 days after your last contact, without additional testing.
- If the first two options are not possible, stay in quarantine for 7 full days beginning after your last contact and if you receive a negative test result (get tested no sooner than day 5 after your last contact). This option depends on availability of testing resources and may not be recommended in some settings.

